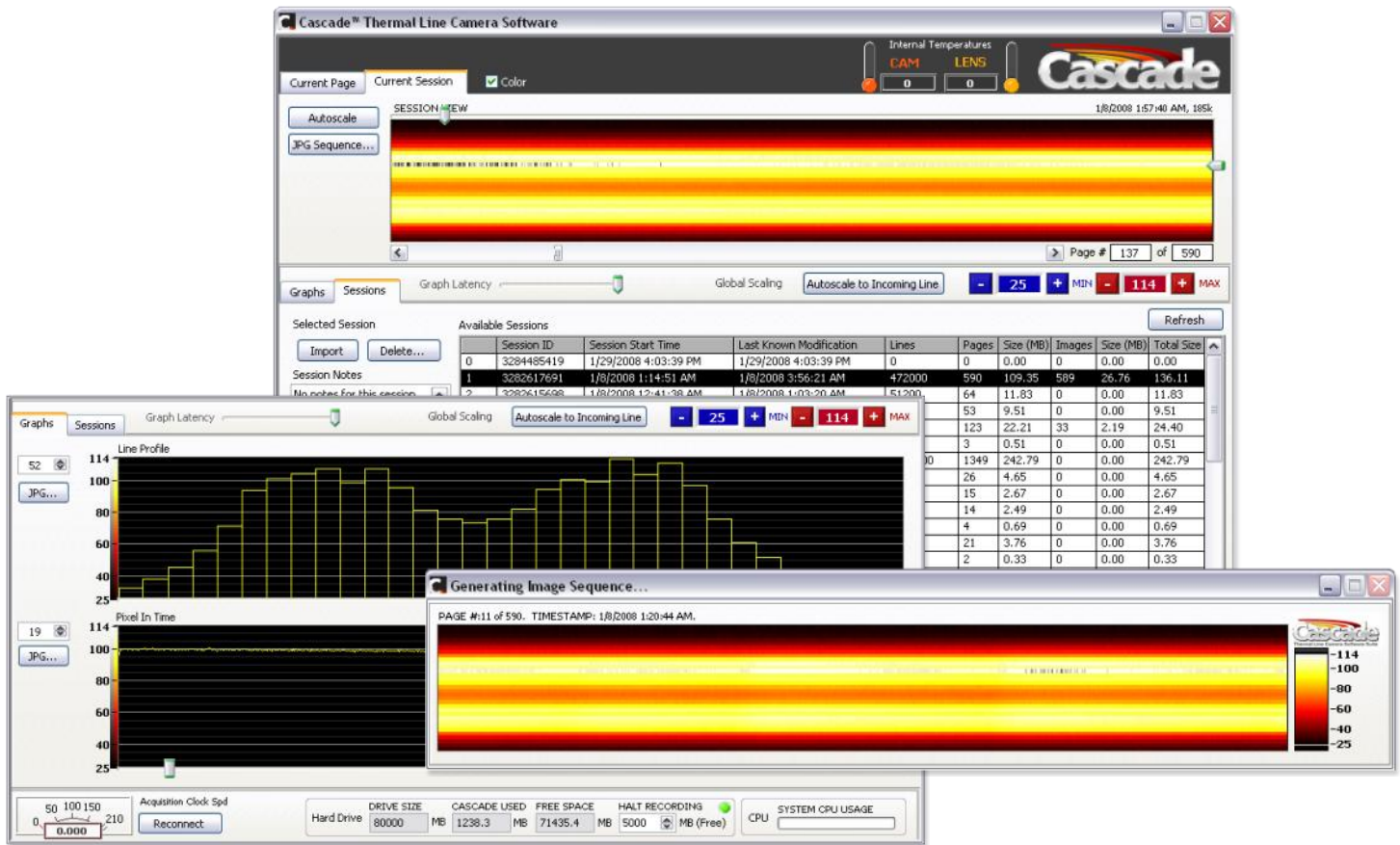


Instantly Analyze Your Process Through Time

Cascade Thermal Line Camera Software Suite



With the Cascade Thermal Line Camera Software Suite, analyzing your thermally driven process is accomplished in seconds. Using TCP/IP, Cascade constantly collects line data from your AXT110 Thermal Line Camera and displays it within a simple and easy-to-manage environment.

Working in Cascade, you can command unlimited lengths of line data by simply dragging the mouse. Scrub through hundreds of thousands of lines rendered automatically into a colorized image that is easy to read and understand. Simultaneous live graphs show more detail for lines and pixels of interest.

Cascade works exclusively with Ann Arbor Sensor Systems AXT Series Line Cameras giving you to tools to process your data efficiently. Best of all, Cascade ships at no additional charge with all AXT Series Thermal Line Cameras and is also available for download at www.aas2.com.

DATA ACQUISITION

- ⇒ Real-time acquisition into 'pages' 800 lines in length
- ⇒ Captures and displays thermal line data at up to 100Hz

DATA MONITORING

- ⇒ Instant velocity reading of data acquisition rate
- ⇒ Monitor lens and camera temperatures
- ⇒ A colorized, cascading display builds a live updating image
- ⇒ Updating line graph shows temperature across the acquired line
- ⇒ Universally control the temperature range of all graphs

DATA STORAGE

- ⇒ Continually record data in real-time
- ⇒ Tab-delimited data format delivers maximum program flexibility
- ⇒ Sessions automatically create new folders—Data is never lost

DATA ANALYSIS

- ⇒ Analyze sessions while simultaneously capturing new data
- ⇒ Generate a sequence of image slices from the data set
- ⇒ Export graphs and images for printout, email or archiving