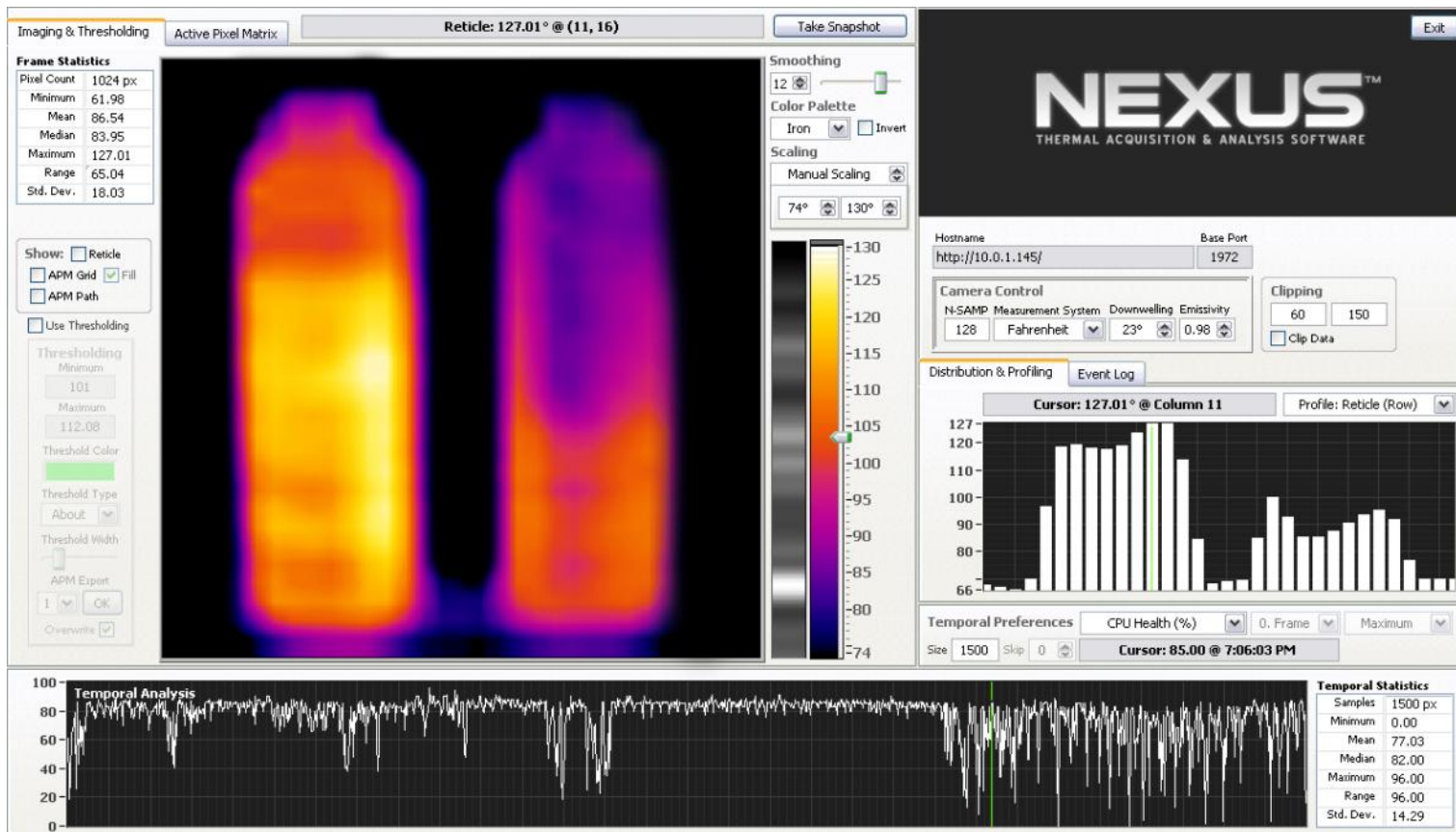


Product Inspection. Process Perfection.

NEXUS Thermal Acquisition & Analysis Software



NEXUS Thermal Acquisition & Analysis Software is the answer to all those questions regarding temperature as a tool for quality control. Observing a phenomenon or process by conventional means may soon have you asking, "What's happening *thermally* here?"

The AXT100 Thermal Imaging Camera in conjunction with NEXUS is designed to answer that question as quickly as possible, without time wasted struggling against a learning curve. This software, freely available with every AXT100 Thermal Imaging Camera, will have you mastering thermal management issues right out of the box.

The elegant interface is designed to show you the data you want without sifting through confusing parameters, endless menus, or massive manuals. Everything you need is right in front of you, leading to the most results for the least effort.

Streaming data can be analyzed in time for trend analysis. Custom regions of any shape can be painted right on the image for statistics. Data and images can be exported with the press of a button for reporting or review. NEXUS is perfect for entry-level users of infrared imaging who don't want to sacrifice power for convenience.

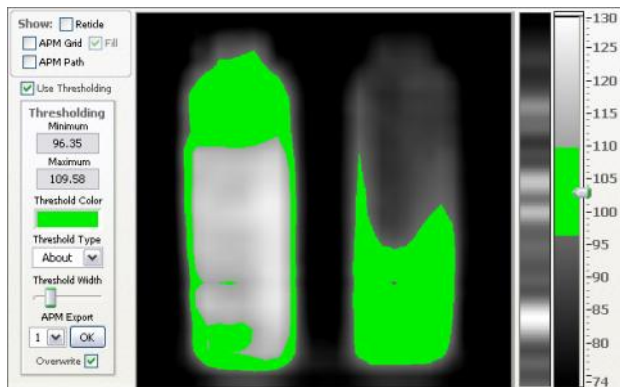
NEXUS ships with all AXT100 Thermal Imaging Cameras and is also available for download at www.aas2.com.

NEXUS FEATURES AND STRENGTHS

- ⇒ Realtime Image Acquisition
- ⇒ Precise image upsampling and smoothing
- ⇒ Intelligent image scaling controls
- ⇒ Instant thresholding and tolerance tools
- ⇒ Canvas-and-brush region of interest engine
- ⇒ Horizontal, vertical or custom path line profiling
- ⇒ Distribution histogram
- ⇒ Instant frame statistics
- ⇒ Monitors PC performance
- ⇒ Variety of color palettes available
- ⇒ Image overlays for easy feature identification
- ⇒ Every value NEXUS calculates is tracked in time
- ⇒ Instant time statistics for any variable trend
- ⇒ Distribution histogram of time data
- ⇒ Event log records important actions and events

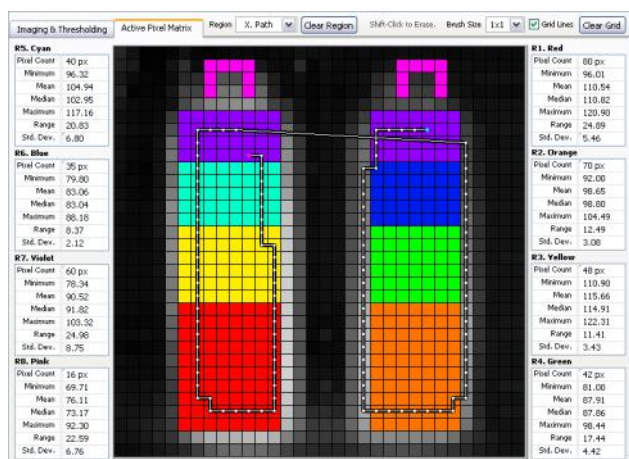
Refer to the feature notes documentation or manual for more features and descriptions to unlock the full power of NEXUS Thermal Acquisition & Analysis Software. Total mastery of your process awaits!

NEXUS Thermal Acquisition & Analysis Software



Instant Threshold and Tolerance Measurements

NEXUS is equipped with intuitive tools for setting thermal thresholds for quality control purposes. Colorize temperatures above or below thresholds. Set a tolerance range quickly to identify trouble spots without touching the keyboard. Thresholding can be dynamic— for example, you may colorize the top 25% of temperatures for each frame. Simple sliders and visual cues make quality control easy. The colorized area can even be saved as a region of interest with a press of a button. NEXUS is designed to deliver results with minimal interaction.



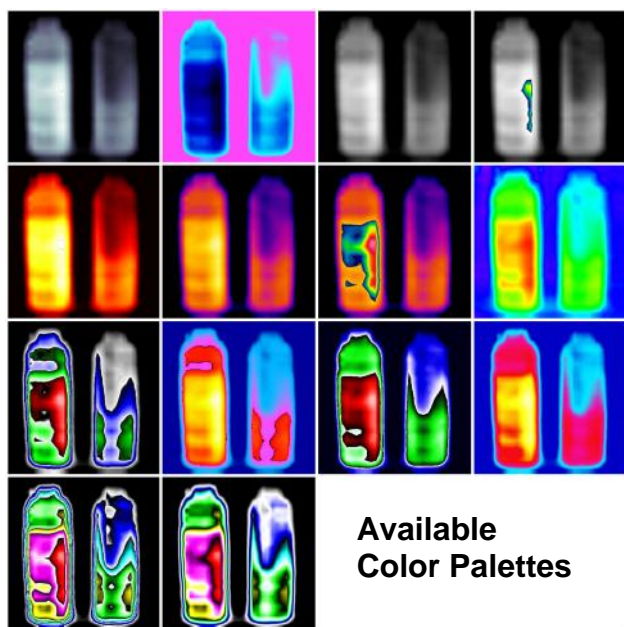
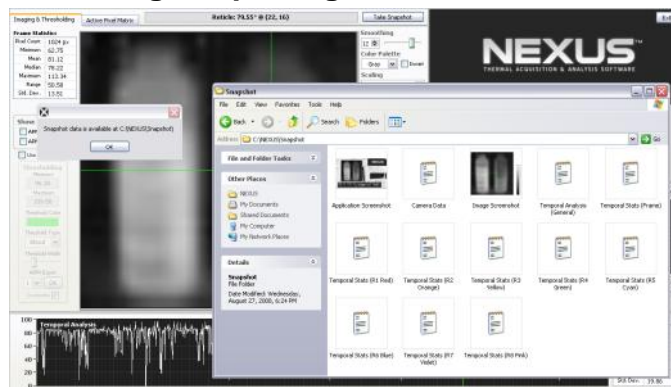
Active Pixel Matrix Technology

NEXUS gives you the regional freedom you need by incorporating the APM technology available as an internal upgrade for AXT Series fixed-mount thermal imaging cameras. Up to eight regions of interest can be painted on top of the image, and statistics such as the average, maximum, or minimum temperatures are instantly available.



NEXUS allows you to draw a path on the image to create a custom line profile. Meandering targets appear as an easy-to-interpret bar graph. Single out multiple points of interest and view them side-by-side instantly.

Data & Image Exporting



Available Color Palettes

Obtaining NEXUS Source Code

NEXUS is a stand-alone application authored in National Instruments LabVIEW 8.5. Source code for LabVIEW can be purchased for custom application development and expansion. Contact us to find out more information on obtaining NEXUS source code.